

What you expect in Geriatrics training and examination

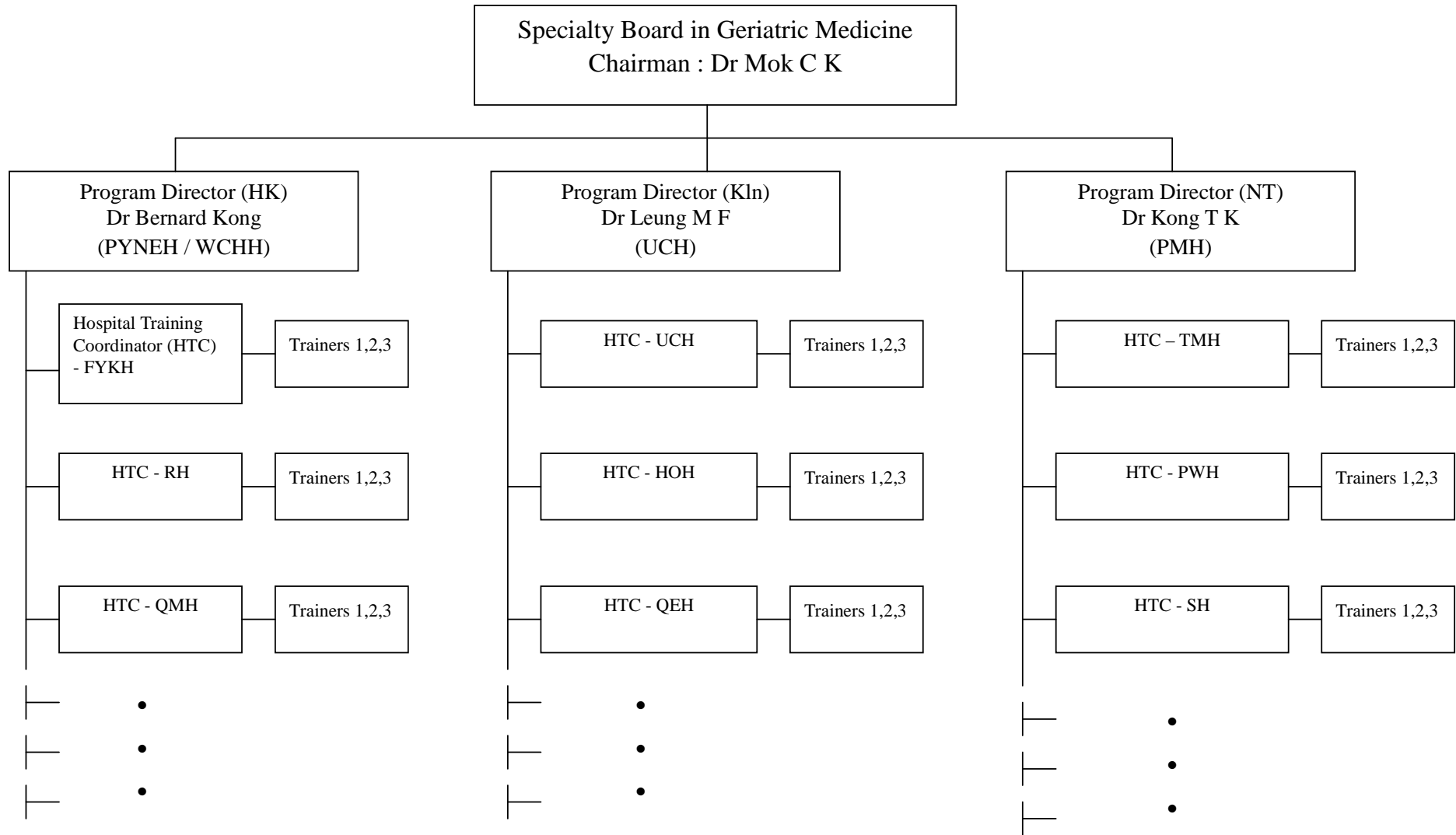
Presented at IHGM

29th July 2011

SBGM

Dr. Christopher Lum

Organization



Training

- Primarily responsible by
 - Training institution / Trainers / Supervisors
- Enriched with co-joint work by HKGS and SBGM
 - Inter-hospital Geriatrics Meeting
 - Workshops (*e.g. Spasticity Workshops in Sept 2012*), Course (*e.g Certificate Course in Practical Care of Dementia*), Symposia
 - Special Interest Groups (SIGs), HKGS

How to become a Geriatrics Specialist

- Enroll, Registration and Pay-to HKCP
 - Currently calling for registration
 - Discuss with COS → HTC → Regional Program Director
- Usual
 - GM as single specialty (3 years)
 - GM + AIM (4 years)
 - GM + another sub-specialty (4 years)

**TRAINING REQUIREMENT FOR
GM IS THE SAME
IRRESPECTIVE OF
WHICHEVER PATHWAY**

Details please refer to
College Handbook

Special Requirements in GM

- Modular training
- Procedural requirement
- Continuous assessment
 - IHGM
 - “Intermediate Assessment”

Modular Training

Modules	Minimum Requirement
Weekly geriatric specialist rounds	24 months
Weekly interdisciplinary case conferences	24 months
Geriatric consultations/assessments	24 months
Acute inpatient geriatrics	12 months
Geriatric specialist outpatient clinics	24 months
In-patient rehabilitation	6 months
Geriatric day hospital	3 months
Home visits and assessments	10 visits
Community Geriatric Assessment Service	6 months
Long-term care (hospital-based infirmary care)	3 months

Procedural Requirements

Please fill in the assessments and procedures performed during the stated period

Domain	Assessment/ Procedure Type	Case (HN/OPD/GDH) number	Sex/Age	Date of assessment/procedure
Mental (Cognition/ mood) Function	Mini-Mental State Exam (MMSE)			
	Clock Drawing Test			
	Confusion Assessment Method (CAM)			
	Geriatric Depression Scale (GDS)			
Physical Function	Bartel Index (BI)			
	Elderly Mobility Scale (EMS)			
Fall and Syncope	Time-up-and-go test			
	Tilt-table Test *			
Swallowing and Feeding	Water swallowing test			
	Nasogastric tube feeding			
	Percutaneous Endoscopic Gastrostomy (PEG) *			
Continence	Urodynamic study			
Ethical/End of Life care	Guardianship Board application			
	Advance Care Planning			
Domiciliary Assessment	Home visit			

* Require only exposure as observer of the procedure

Trainees enrolled since 1 Jan 2010

→ Log in required

Trainees enrolled BEFORE 1 Jan 2010

→ Log in not required, BUT still require adequacy in knowledge and experience in these procedures

Domain	Assessment/ Procedure Type
Mental (Cognition/ mood) Function	Mini-Mental State Exam (MMSE)
	Clock Drawing Test
	Confusion Assessment Method (CAM)
	Geriatric Depression Scale (GDS)
Physical Function	Barthel Index (BI)
	Elderly Mobility Scale (EMS)
Fall and Syncope	Time-up-and-go test
	Tilt-table Test *

Swallowing and Feeding	Water swallowing test	
	Nasogastric tube feeding	
	Percutaneous Endoscopic Gastrostomy (PEG) *	
Contenance	Urodynamic study	
Ethical/End of Life care	Guardianship Board application	
	Advance Care Planning	
Domiciliary Assessment	Home visit	

* Require only exposure as observer of the procedure

Continuous Assessment - IHGM

Specialty Board in Geriatric Medicine Guidelines on Higher Physician Trainee Case Presentations in Inter-hospital Geriatric Meeting (effective Aug 2009, updated Sept 2009)

Requirement

Each HPT in Geriatric Medicine should present once before each annual assessment. The case presentation should be based on patients under their own care.

Attendance in Inter-hospital Geriatric Meeting

All HPTs in Geriatric Medicine should attend at least half of the Inter-hospital Geriatric Meetings.

Assessment

All case presentations by HPTs will be assessed by representatives of the Specialty Board which normally will be the regional programme director of the trainee (or in his absence, a representative from the Specialty Board). A scoring will be marked based on pre-set criteria (see marking sheet below) by the regional programme director and submitted to the Board Secretary for record. The scoring of the case presentation will be reviewed during the trainees annual and exit assessment.

Continuous Assessment – Intermediate Assessment

- HPT started before 1 July 2011
→ Annual Assessment
- HPT started after 1 July 2011
→ Assessment at 18 months + SLT
(please refer to College Guideline – in press)

Irrespective of which, assessment requirement is still the same:

- (1) Assessment of knowledge and skills in modules that trainee has gone through;
- (2) Discuss / Guidance on dissertation work plan
- (3) Collect feedback on training

Exit Examination

- Dissertation
- Structured and Standard Questions
 - One question in each of the 3 categories
 - Clinical management and case scenarios
 - Data Interpretation
 - Ethics / EBM
 - (to be illustrated later)

Structured and Standard Questions

Processes:

Call for questions from Trainers

→ Submission to Working Group

→ Vetted / Modified by reps from SBGM

→ Keep in Question Bank

→ Questions chosen by SBGM Chairman
and Secretary for Examination

Questions?